

POLISHING ACCESSORIES



POLISHING MOTORS, 240 volt single phase

0.5 hp 0.37kW, 2850 rpm

Double ended Stock No: 8834E. Single ended Stock No: 8834S

1.5 hp 1.1 kW, 2850 rpm

Double ended Stock No: 8835A. Single ended, Stock No: 8835S

VARIABLE SPEED MOTORS- 0 to100% of the motor speed rating with no loss of power

1.5 hp 1.1kW, 2850 rpm

Double ended

**Replacement spindles also available upon request.
Stock No:1041S**

COWL SET

1 x Hood assembly with safety screen.

1 x Base unit plus 1 x Mesh

2 x Adjustable slide runners

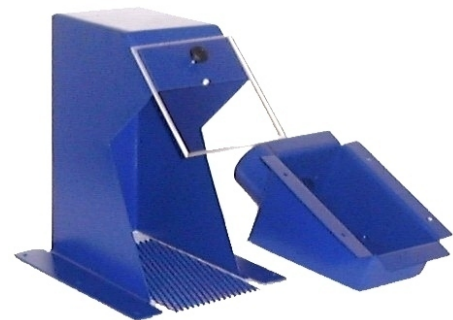
Height = 290 mm. Width = 135 mm

Front to rear = 240 mm. Weight = 2.5 Kgs nett

Maximum wheel size 150 mm Ø x 50 mm wide.

Finish: powder coated steel.

Stock number: 2484D

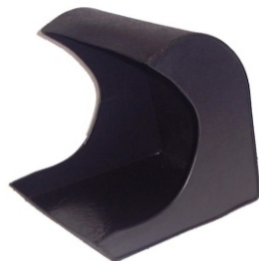


POLISHING MOTOR BASE

Motor base unit to bring motor to working height

240 volt mains switch and motor switch

Stock number: 8835F



LOW COST COWLS

Ideal for fitting to polishing and grinding motors where extraction is not available or required.

All welded Black Polypropylene construction which is virtually unbreakable.

Waterproof, can be used for wet or dry operations.

Will not split or shatter if hit by articles during polishing

Height = 220mm, Width = 260mm,

Front to rear = 280mm.

Stock number: 6248D

 <p>Balco Engineering Limited</p>	<p>Registered office: Unit Z, Hamstead Industrial Est, Austin Way, Great Barr, Birmingham, B42 1DU Reg. No: 1414313 VAT No: 294 5870 13 Tel: 44 (0) 121 358 1456 Fax: 44 (0) 121 357 4159 Email: info@balco.co.uk Website: www.balco.co.uk <i>Manufacturing processing equipment since 1969</i></p>	 
---------------------------------------------------------------------------------------------------------------------------------	----------------------------------------------------------------------------------------------------------------------------------------------------------------------------------------------------------------------------------------------------------------------------------------------------------------------------------------------------------------------------------------------------	-----------------------------------------------------------------------------------------------------------------------------------------------------------------------------

“BUFFA” POLISHING UNIT



Stock No: 6752D

Width: 610 mm

Height: 260 mm

Front to back: 280 mm

Motor: 3000 rpm 210W
240 volts

Great for students, repairers, occasional polishers, model makers and lots of other trades and home use. In fact anyone who wants a polishing system but does not want a sophisticated extracted unit.

All welded Black Polypropylene construction - virtually unbreakable.

“BUFFA” will not split or shatter if hit by articles during polishing

Very quiet, mounted on rubber non - slip feet.

Can be adapted to connect to small domestic and industrial “HENRY” type suction units or even vacuum cleaners.

BUFFA unit includes Polishing motor, enclosure and plug.

To use your “BUFFA” polishing unit, place on a firm work top. Turn the red switch to “o” position and plug into a normal three pin 240 volts socket and switch on.

Put your polishing mop onto either spindle and rotate to tighten into place.

It is recommended to put a mop on each spindle for safety reasons.

Turn the red switch to “I”, ensuring your hands are clear, the mop will now turn.

Do not exceed mop sizes of 150mm Ø, 100mm Ø is recommended.

If the motor slows, reduce the work pressure on the mop.

If the motor becomes hot, stop polishing and allow the motor to run for 5 minutes without polishing to cool down.

Do not wear loose clothes. Jewellery or long hair can become tangled around the polishing mop. Do not polish when tired or under the influence of alcohol or drugs.

“BUFFA” Extraction adaptor kit number 6753D allows the unit to be extracted and comprises of two circular outlets on round panels.

To fit: Cut two 50mm holes in the rear of the unit behind the polishing mops.

Place suction connector over the holes and screw panels with the self tapping screws.

Connect your extractor / vacuum unit to either outlet.

Note: most domestic vacuum cleaners are not designed to run non - stop, use for 15 minutes maximum, unless continuously rated.

Refer to vacuum handbook for further information.



Registered office: Unit Z, Hamstead Industrial Est,
Austin Way, Great Barr, Birmingham, B42 1DU
Reg. No: 1414313 VAT No: 294 5870 13
Tel: 44 (0) 121 358 1456 Fax: 44 (0) 121 357 4159
Email: info@balco.co.uk Website: www.balco.co.uk
Manufacturing processing equipment since 1969



Scratchbrush system

WET

SCRATCHBRUSHING

MACHINE



CLEAN AND TEXTURE JEWELLERY THE EASY WAY

Polishing jewellery using a brass "Scratchbrush" wheel with water and a small amount of soap or detergent produces a satin like appearance. The bristles of the wheel penetrate deep into recesses meaning the surface can be cleaned without damaging the edges of the recess.

Produces brilliant finishes with very little work.

Does not damage large and delicate items

Chains can be cleaned and polished safely

Perfect for antique silverware and medal renovation & production as it does not produce the "brand new" look.

Available in 3 sizes in 200/240 volts. 0.5hp motor 1380rpm with taper spindle. Beige textured polypropylene construction.

Model "MINI" (illustrated) Height = 600mm, x Width = 280mm x Working Depth = 180mm/ Overall Depth = 330mm.

Model "Standard" Height = 610mm x Width = 405mm x Working Depth = 305mm/Overall Depth = 500mm.

Model "Silversmiths" Height = 800mm x Width = 700mm x Working Depth = 405mm/Overall Depth = 600mm.

Model "Auto" with re-circulating water pump Height = 540mm x Width = 520mm x Working Depth = 305mm/Overall Depth = 640mm.



Registered office: Unit Z, Hamstead Industrial Est,
Austin Way, Great Barr, Birmingham, B42 1DU
Reg. No: 1414313 VAT No: 294 5870 13
Tel: 44 (0) 121 358 1456 Fax: 44 (0) 121 357 4159
Email: info@balco.co.uk Website: www.balco.co.uk
Manufacturing processing equipment since 1969



DS 55